

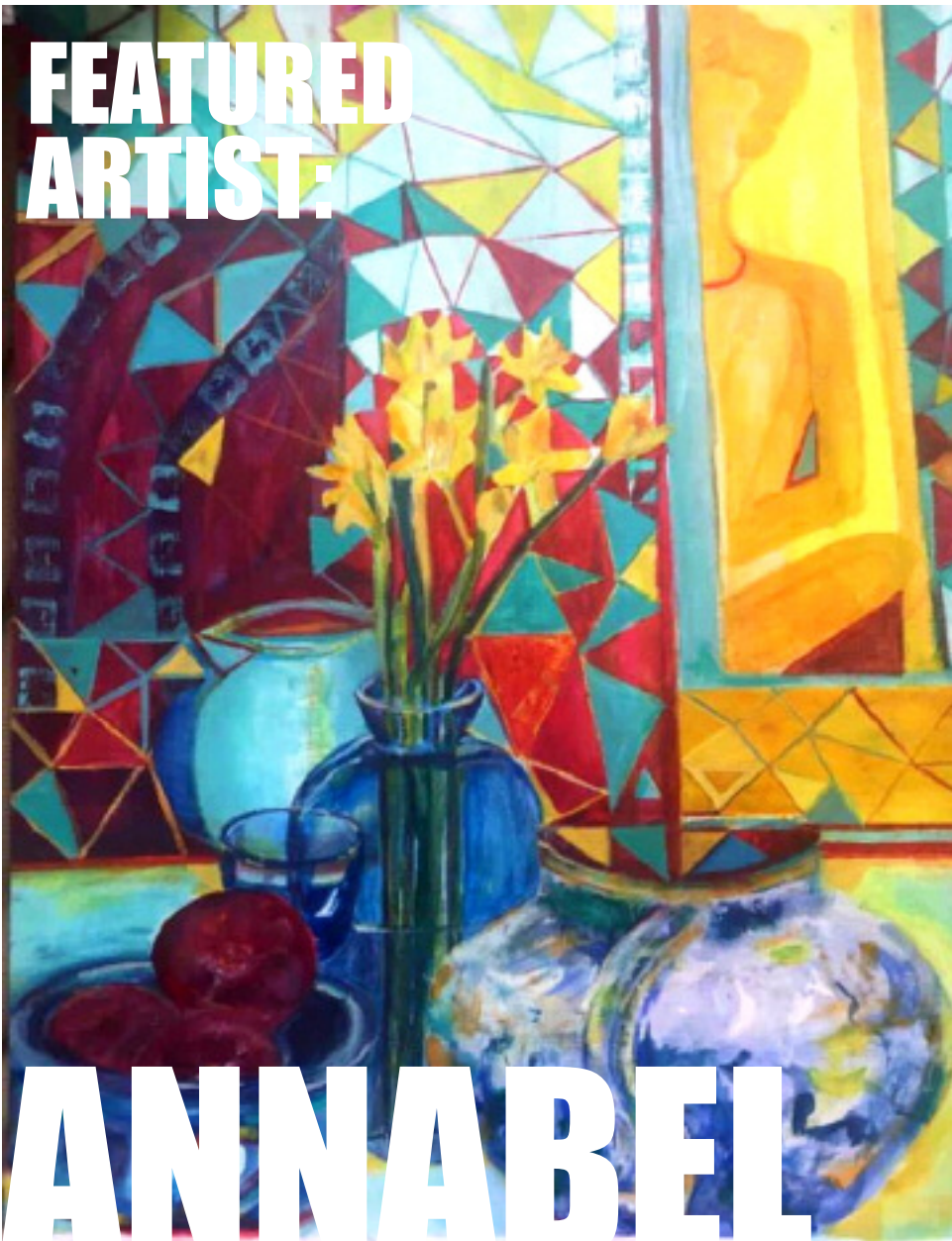


# THE HUDDERSFIELD ARTIST

SPRING EDITION 2024

NEWSLETTER OF THE HUDDERSFIELD ART SOCIETY

**FEATURED  
ARTIST:**



**ANNABEL  
MAAMOUN**

**INSIDE...**

**SOCIETY NEWS...**



A general round-up of the group activities and other news involving members

**AGM 2024**



Report-back from the Annual General meeting held on the 23rd of March

**EVENTS...**

Some dates for your diary





## CONTACT US

[www.huddersfieldartsociety.com](http://www.huddersfieldartsociety.com)

[huddartsoc@gmail.com](mailto:huddartsoc@gmail.com)

[www.facebook.com/huddartsoc/](https://www.facebook.com/huddartsoc/)

[www.instagram.com](https://www.instagram.com)

search - huddersfield\_art\_Society

[www.youtube.com](https://www.youtube.com)

search - Huddersfield Art Society

Newsletter- [glwartist@gmail.com](mailto:glwartist@gmail.com)

## GROUPS

### PORTRAIT GROUP:

**Maggie O'Keeffe**

[maggie@deadgoodmusic.com](mailto:maggie@deadgoodmusic.com)

[www.facebook.com/groups/haspg](https://www.facebook.com/groups/haspg)

### SATURDAY PROGRAMME:

**Jo Sykes**

[joannesykes@virginmedia.com](mailto:joannesykes@virginmedia.com)

[www.facebook.com/groups/satprog](https://www.facebook.com/groups/satprog)

### LIFE DRAWING GROUP:

**Carol Wood**

[carolwood303@gmail.com](mailto:carolwood303@gmail.com)

### ABSTRACT GROUP:

**Rachael Singleton**

[rachaelsingleton@icloud.com](mailto:rachaelsingleton@icloud.com)

### OUTDOOR EVENTS:

**David Whiting**

[davidwhitinghas@yahoo.com](mailto:davidwhitinghas@yahoo.com)

# CONTENTS

**President's letter** 3

## SOCIETY NEWS

**Portrait Group** 5

**Abstract and Life Drawing groups** 6

**Saturday programme** 7

**Saturday programme reviews** 8

**News** 9

**Annual General Meeting** 10



## FEATURES

**Featured artist: Annabel Maamoun** 13

## MEMBERS' NEWS

**New member** 15

**Obituary – Margaret Fairclough** 16

## WHAT'S ON

**Members' events coming up** 17



## PRESIDENT'S LETTER

# LOTS TO ORGANISE BUT DON'T FORGET THE ART

I am writing this very soon after our Annual General Meeting, and I repeat what I said then that we do appreciate members attending what may not be the most exciting event of the Saturday programme, but is a show of support from you for all the work we on Council are doing. It is also an obligatory requirement that we get your approval for our annual accounts and the membership of our Council. I made the decision during my

the annual accounts and the Council. I would hope to hear from at least 50% of our membership.

### BUDGETING

As lead Trustee I have been producing financial reviews and recommendations for our budgeting. It is pleasing that by following carefully thought through policies, some of which were put to last year's AGM, we have a set of annual accounts that show

we found that our current account was remaining far too high, so we actually put £4000 back into those investments. I have taken the view, and supported by Council, that we should aim at a balanced budget each year, but since our investments still total around £34000, this should not be regarded as untouchable but used for significant expenditure when the need arises.

### ANNUAL EXHIBITION

This has a connection with my second point, an issue that affects all of us and which we have been highly preoccupied with since last October. Since the Huddersfield Art Gallery closed in October 2019, just as the rain was dropping through the roof on the last day of our exhibition, we have had to find alternative premises. We had secured the temporary loan from another organisation of one of the empty shop units on the Piazza, but this being late 2020 when the dreaded Covid-19 was rearing up again after the summer, understandably not enough members were prepared to risk attending and so we cancelled the event and just went online. For the following three years we have been fortunate to

---

## 'WE APPRECIATE MEMBERS ATTENDING THE ANNUAL GENERAL MEETING'

---

previous term as President to send out all the AGM documentation, rather than just print copies to put on the seats at the meeting, as I want every member to have a clear understanding of everything that goes on in our very active and successful Society. As before I will be emailing all members who did not attend to ask you to confirm your votes (hopefully a 'yes') to

a surplus of income over expenditure. Members, particularly those who been with us for some years, will remember that we have in the past had to take several thousands of pounds from our investments to cover overspending. The opposite was true in 2023 – because we withdrew from the investments as recently as 2021, but Covid-19 meant we had much lower spending,



## PRESIDENT'S LETTER (CONT'D)

be included in the Temporary Contemporary project, organised by Kirklees Council's Creative department, and had use of a very suitable and attractive shop unit – for absolutely no cost. Although we did have over 700 visitors over the three weeks, our feelings of pride in our show were overshadowed by the increasingly uncertain future of the Piazza, scheduled for demolition in the Huddersfield Blueprint.

### SEARCHING

Since the exhibition ended we spent many hours enquiring, contacting and visiting a number of possible locations, including Byram Arcade, Holmfirth Tech, the University, the Town Hall, Lawrence Batley Theatre, but none was judged suitable or viable. Though we had said we wouldn't want to be in the Piazza again, we did enquire there also, to be told that only one very small unit could be offered. However around a month ago I had a conversation with the Kirklees officer who manages the arts aspect of the Piazza and was told that several arts organisations were intending to remain in the Piazza but on a commercial rental basis, and they were keen to sublet to other organisations for short term events. It even seems possible the Art Gallery will have a presence. A group of us visited the unit and were impressed, and felt that the Piazza should be given another try despite the uncertainty of footfall and likely disruption if demolition and building goes ahead at the other end. One other option was still

under consideration – Holmfirth Civic Hall, where Artweek is held every year. A well known building near the centre of vibrant and 'arty' Holmfirth. Members at the AGM were invited to give their views, and Council members met straight after the AGM to make a final decision. I can now tell you that the majority vote was for the Piazza, which also reflected the views expressed by members earlier. Identification with our home town, included in our name, was a major aspect that featured. The connection with my

consisting mainly of Council members, but we have found in recent years that several of you have been willing to assist us in various ways, and so we shall be approaching those who have helped in the past or who have said they are willing to help this year, but if any others of you would like to be involved, please let us know.

### AND FINALLY...

I am so aware of this as President, let's remember that we should not let all this or-

---

## 'IDENTIFICATION WITH OUR HOME TOWN, INCLUDED IN OUR NAME, WAS A MAJOR ASPECT THAT FEATURED'

---

first previous paragraph is that this is seen as a justified example of substantial expenditure, which will be £1000 for just over two weeks. This may seem a lot but works out at £55 per day, a similar amount to what we pay for half days in our regular venues and enables us to have access at any time of day or evening.

### PLANNING STARTS AGAIN

So, the planning starts once again. The dates are likely to be slightly earlier than before, running up to mid-September rather than the end. I will again lead a group

organising detract from our main activity – creating art. It was great after the formal AGM for some of us to share our efforts arising from the Abstract group – I think we managed to convert some 'non-believers'! By the time of the next Newsletter we shall be getting involved in the outdoor days, which I have already announced (see also in this newsletter) for which positive responses are already coming in.

*Best regards to all of you,  
David Whiting  
President*



# SITTING PRETTY AT 100

The article below is by Martin Shaw from Huddersfield Hub and was published on 9th March.

**HE COULD** barely move a muscle and certainly couldn't snatch 40 winks but Richard Styan was the artist's perfect model – at the age of 100.

Centenarian Richard was the latest life model for the Portrait Group at Huddersfield Art Society and enjoyed every minute.

Richard had to stay still for an hour-and-a-half with only a 15-minute tea break halfway through while members of the group captured his likeness in water-colour, oils, graphite, charcoal, acrylic or pastel.

Dad-of-three Richard, who has six grandchildren and 16 great-grandchildren, described his unusual night out at The Quaker Meeting House in Paddock as a "very pleasant way to spend the evening."

His daughter Annabel is a society member and it's the second time Richard has been invited along.

"There were about 15 artists and they were all very friendly and welcoming," said Richard. "For some reason they seemed very pleased to see me!

"It's quite an effort to stay still all that time and they asked me how I did it. It's just a question of discipline.

"I got a bit of a stiff neck but I got over that. I pretended to lift the top of my head without lifting my body and that eased the tension in my neck."

Previous sitters for the group have included teenage twins, a mother and baby, a 1920s flapper, a piano player and an elfin!

Richard was impressed with the finished artworks and said: "They managed to capture my likeness. I'm sure it helped because I kept perfectly still."

Linda Downs, from the Portrait Group, said: "Having Richard sit for us again was absolutely brilliant. He sat for us when he was 99 and has agreed to return when he's 101!"



ORGANISER:  
**LINDA  
DOWNS**

lmdowns@hotmail.co.uk

**THE** Portrait group thrives, average attendance 12 but max attendance has been 19! (we had a couple of very lean weeks because of the weather).

Highlights of this term included our lovely Elfin sitter Andy , group members Brendan, Bill, Jane, Fawzi and Caro , and especially 100 year old Richard Styan.



# ABSTRACT GROUP



ORGANISER:  
**RACHAEL SINGLETON**

rachaelsingleton@icloud.com

**THE** abstract group continues to flourish with a dedicated membership that varies each month but averages about 12. We have a programme of interesting ideas that come from members as well as an on-going series looking at design elements. A few meetings are led by members from the group which gives us new perspectives and a way to find out more about each other's interests and skills. We continue to relish our 'homework' and discussions about what everyone has done as it's always so different!



# LIFE DRAWING GROUP



**LIFE** drawing has been well attended and we continue to have an excellent, varied programme of models.

We will not be meeting Easter week but will then continue from April 11th to May 23th with the exception of May 2nd when the premises are used as a polling station.

We will be taking a break after May 23rd until September.



ORGANISER:  
**CAROL WOOD**

carolwood303@gmail.com



# SOMETHING FOR EVERYONE

## PRESENTATIONS, WORKSHOPS AND TUTORIALS THE SATURDAY PROGRAMME OFFERS A WIDE RANGE OF ACTIVITIES



ORGANISER:  
**JO SYKES**

joannesykes@virginmedia.com



**THE SATURDAY** Programme continues to offer a range of sessions including Tutor led workshops, Demonstrations and member's own workshops. The full programme can be found on our website at: [www.huddersfieldartsociety.com/saturday-programme](http://www.huddersfieldartsociety.com/saturday-programme), including descriptions and photographs from previous Saturday meetings. The sessions are also greatly enhanced by our member's presentations where we learn a bit more about the member's art journey, inspiration and interests in art. Recently we have needed to implement a booking system for the Tutor led workshops – the relevant sessions are indicated on the website and members will be informed how to book via email 2 weeks before a session. However, the demonstrations and members' own workshops remain open to all and are also very popular.



**RACHEL SYKES** SUMMARISES SOME OF THE GREAT THINGS THAT HAPPEN IN THE SATURDAY PROGRAMME. IF YOU ARE NOT THERE YOU ARE REALLY MISSING OUT.



**SATURDAY 13TH JANUARY**

Members presentation by Jo Sykes sharing her new year focus on portrait work.

Anne Allan then led a fascinating demonstration and workshop introducing everyone to Chinese brush painting.

**SATURDAY 27TH JANUARY**

Members presentation by Ros Fraser Johnson who showed a selection of her very detailed work inspired by the local area, nature and light.

An excellent demonstration followed by Tracey Krupianka showing how she completes a painting and shared tips and techniques with members.



**SATURDAY 10TH FEBRUARY**

Members presentation by Denise Short demonstrating colour and composition with a wide range of subjects.

Members own workshop followed which focused on contemporary still life inspired by other artists.

**SATURDAY 24TH FEBRUARY**

Christine Kirton led a workshop demonstrating her atmospheric landscapes. Everyone enjoyed the afternoon and produced some very interesting and creative pieces of work.



**SATURDAY 9TH MARCH**

Members presentation by Linda Riggall talking about the inspiration behind her work.

A demonstration by Mark Burgum followed showing his techniques with perspective using graphite.

FOR MORE IN-DEPTH REVIEWS AND PICTURES OF THE SATURDAY WORKSHOPS AND DEMONSTRATIONS VISIT THE WEBSITE AT: [WWW.HUDDERSFIELDARTSOCIETY.COM](http://WWW.HUDDERSFIELDARTSOCIETY.COM)



# SUNSHINE AND ART

**FOR** those members that enjoy a bit of fresh air with their creativity David has organised venues for our outdoor days for this summer. They are:

**Saturday June 8th:** National Coal Mining Museum, on the road towards Wakefield. This does not include an underground visit! There are many examples of buildings and machinery associated with mining at two pits, but also a woodland nearby. We will have the learning space, and there is a cafe within the museum complex.

**Saturday July 13th:** Upperthong Village Hall. We last went here in 2015 and had a good day. The hall is situated outside the village but not far away so the village is also possible for locations. I will be unable to attend this so it will be led by Keith Harris.

**Saturday August 10th:** Hepworth Village Hall. Let's forget that it rained when we went here in 2017, and hope to see the attractive village in the sun. Keith, who lives there, has organised the booking but I will also be there. Keith tells us that the Butchers Arms is open again for lunch.



Please let David know if you would like to attend one or more of these days out, either on his HAS Gmail or his personal email at: [davidwhitinghas@yahoo.com](mailto:davidwhitinghas@yahoo.com)

## CHRISTMAS LUNCH



Members enjoyed a lovely festive lunch and get together at the Fenay Bridge Pub, organised by Sue Toft.

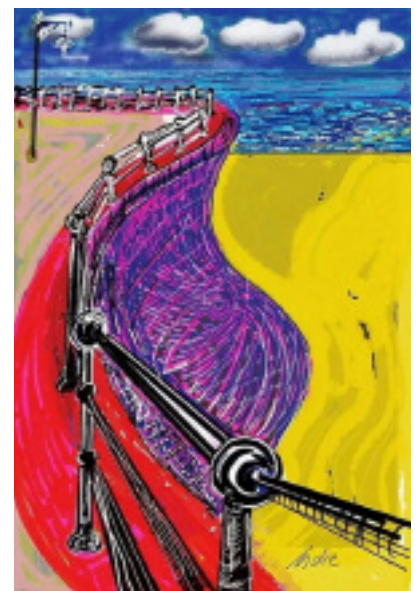
## MOMENTS IN TIME

**Indulis Svikis** (Indie), one of our new members is having an exhibition in the Byram Arcade from Friday the 5th April until the end of May. You can see his work at The Object Edit on the Second Floor of the Byram Arcade.

He works digitally:

"I have admired the work of David Hockney for as long as I can remember – he is a fellow Yorkshire man after all. His work inspired me to follow his lead in the use of digital devices to create artwork"

Watch his promotional video at: [youtu.be/Qv-hJiWvFY?si=Awkw3oyilcaNd3fE](https://youtu.be/Qv-hJiWvFY?si=Awkw3oyilcaNd3fE) or visit his website: [www.artbyindie.com](http://www.artbyindie.com)



# ANNUAL GENERAL MEETING 2024

## MINUTES OF THE ANNUAL GENERAL MEETING HELD AT MOLDGREEN UNITED REFORMED CHURCH ON THE 23RD MARCH 2024



**PRESENT:** David Whiting (**DSW**) – President; Jo Sykes (**JoS**) – Vice-President; Carol Wood (**CW**) – Treasurer; Rachel Sykes (**RS**) – Secretary; Mary McKenzie (**MM**) – Membership Secretary; Shirley Waddington (**SW**) – Council Member; Stacey Shaw (**SS**) – Council Member; Silvia Idle; Robert Ingham; Karen Dewhirst; Linda Riggall; Nina Bensley; Gillian Freear; Jean Parkinson; Rachael Singleton; Louise Heptonstall; Bob Hryndyj; Keith Harris; Matthew Evans.

**APOLOGIES:** Sue Toft (**ST**) – Council Member; Joan Leslie; Annabel Maamoun; Jackie Brook; Gilly Markham; Kate Booth; Bruce Mulcahy; Beryl Conroy; John Elliott; Fiona Colston; Linda Downs; Kay France; Judy Tadman; Bron Oldroyd; Rob Greenwood; Judith Bleazard.

MINUTES OF THE A.G.M HELD  
ON THE 18th MARCH 2023  
Nina Bensley proposed that these  
were correct and Bob Hryndyj  
seconded.

### MATTERS ARISING FROM THE MINUTES

At last year's A.G.M Margaret Fairclough was made a life member, DSW announced the sad news that Margaret passed away this week. Margaret was a gentle and quiet lady, a long standing member of HAS and Exhibition Secretary for 3 years. In more recent years she regularly attended outdoor days, gallery visits and the Christmas lunch.

### WELCOME AND INTRODUCTION

DSW was pleased to see everyone and welcomed them to the A.G.M. He thanked all Council members for their hard work, enthusiasm and support, and pointed out that over the past year we have increased the membership, events have been well attended and we held a very good exhibition. Council is small at the moment and it

# ANNUAL GENERAL MEETING 2024

is great to have Sue Toft who joined last year and Stacey Shaw who joined council recently. DSW acknowledged Rachael Singleton as leader of the Abstract Group and Linda Downs for her commitment and enthusiasm as the Portrait Group Leader for the past 6 years, Linda is now stepping down and DSW is delighted that Maggie O' Keeffe is taking over the group. He mentioned Glen Williams for being Editor of a wonderful Newsletter and his important role on the exhibition team with publicity. During the exhibition we had members outside of Council who took on the role as leaders at the exhibition and did an excellent job. DSW pointed out that John Steadman left HAS last year and JoS took over the role of IT and the Website from him and is doing a brilliant job. DSW is President and Lead Trustee, he complies the financial reviews and pointed out that income has exceeded expenditure.

## ANNUAL REPORT – RACHEL SYKES

RS has prepared the Annual Report which summarises what we have done throughout the year. RS asked if everyone had received a copy of it. RS pointed out that 90 member have paid their subscriptions this year so far and we currently have an addition 4 life members. The annual subscription will remain at £25.

The 127th Annual Exhibition in Unit 35 on the Piazza was a great success showcasing 150 pieces of work from 55 Artists. Louise Ventris and Maggie O' Keeffe jointly won the Selectors Choice Award, Rachael Singleton won the First Time Exhibitors Award, and Stephen Asquith won the Public Vote Award. Six paintings were sold and there was no charge for the unit.

The Saturday Programme has been varied, interesting and very well organised by JoS, SS has now joined Council and is helping JoS as a Saturday Programme Co-ordinator. The Saturday Programme meetings continue to be very popular and well attended by members.

We had three outdoor days over the summer and these were a great success organised by DSW and Keith Harris and all well attended by members.

We had two Gallery visits during the year, organised by DSW, Cooper Gallery in Barnsley and Graves Art Gallery in Sheffield, these were again well attended.

The Abstract Group continues to be a success led by Rachael Singleton, it offers a flexible and varied programme and is very popular with members.

We continue to have three Member Trustees, DSW, Keith Harris and MM, with guidance on investment decisions being taken by DSW.

Life Drawing Group continues to be led by CW and Rob Greenwood. Linda Downs who has led Portrait Group for the past 6 years is stepping down and we are delighted that Maggie O'Keeffe has agreed to take over as the group leader.

Glen Williams continues to produce a fantastic Newsletter which appears on the website and paper copies are sent out on request. JoS continues to update the website with events and activities and RS keeps Facebook and Instagram updated with all events.

DSW added that the Annual Exhibition was a success and went well, but the statistics, votes and visitors were down on last year due to a lower footfall. This year we started to look for an alternative venue

and explored a number of alternatives, however the Piazza had a number of positive aspects. We had almost 700 visitors which was rewarding, we held our own meetings during the exhibition and the Opening event with 6 member presentations was brilliant, and Keith Harris led a presentation which was quite an experience and well attended by members.

## TREASURER'S REPORT – CAROL WOOD

We are currently in a very good position with the finances and everything is going up. Group attendance has gone up which has balanced out the rent going up, and investment income is going up. This puts us in a position to be able to spend more. CW pointed out that Gift Aid is low and we must try to chase up signed forms. This year we had surplus funds in the current account which has been put back into investments.

DSW added that investment income is £904 but only £748 of this was added, the rest being what interest would be up to December 31st if available. We had too much money in the current account as we drew £5,000 from investments previously, so we decided to put £4,000 away at an interest rate of 4%, reducing the cash in the current account. The travel figure of £320 was the mini bus to Sheffield, but some of this was offset by members paying fees for the trip. We did well financially from the exhibition with the entry fee increasing from £5 to £10, and we did not give as many prizes. The rent figure has gone up and the Abstract Group accounts for some of the extra rent. Keith Harris asked if it would be acceptable for members to sign electronically for Gift Aid, CW confirmed it would be acceptable.

# ANNUAL GENERAL MEETING 2024

Last year we proposed an increase in subscription which would have come into effect from January. We decided to defer the increase, but we have the option to increase the subscription if we need to as we have already had members agreement.

Members were asked to vote in favour of the annual accounts being accurate, which they did unanimously.

## **ELECTION OF COUNCIL MEMBERS**

RS read out the list of Elected Council Members. All members present voted unanimously for the appointment of Council and the new positions. The following officers were elected.

**President** – David Whiting

**Vice-President** – Jo Sykes

**Treasurer** – Carol Wood

**Secretary** – Rachel Sykes

**Membership Secretary** – Mary McKenzie

**Exhibition Secretary** – 'Role Vacant'

Managed by the Exhibition Team

**Programme Secretary** – Jo Sykes

**Website & IT Manager** – Jo Sykes

## **Other Council Members:**

Shirley Waddington; Sue Toft; Stacey Shaw.

**Not on Council:** Glen Williams; Rachael Singleton; Maggie O'Keeffe; Rob Greenwood.

RS read out the list of Elected Council Members. All members present voted unanimously for the appointment of Council and the new positions.

## **EXHIBITION**

DSW informed members of the present situation on the exhibition. We have had a

unit on the Piazza for 3 years free of charge but the footfall is reducing. We have been looking for alternatives such as; Holmfirth Tech, Methodist Church, MURC, Byram Arcade, Lawrence Batley Theatre and the Media Centre. We decided that there would be a lack of footfall or they were not central so we decided to approach the Piazza again. RS contacted Anne at Kirklees Creative and found that there could be the possibility of a small unit. Three weeks ago DSW contacted Anne at Kirklees Creative and found out that Collaborarti are having a unit which they hope to hire out to creative organisations. This will be near our previous unit, and West Yorkshire Workshop and the Art Gallery are having units near by, forming a cluster of viable organisations. At the same time ST has looked at Holmfirth Civic Hall, but it is not possible to have this for longer than 3-4 days and we would need the extra cost and work of bringing in display boards.

Members present have expressed various views, and Council members will meet after this AGM to make a final decision on the venue.

## **AOB**

DSW announced the sad news that one of our new members Jay Johnson passed away suddenly two weeks ago.

Rob Greenwood raised the issue about increasing the representation of ethnic minorities, DSW asked what everyone thinks? Nina Bensley pointed out that anyone can join HAS and we do not prevent anyone joining from ethnic backgrounds. DSW feels we should make an effort to attract members from other backgrounds. Rachael Singleton talked about promoting

ourselves to groups who do not move in the same circles by planting ourselves in creative areas. Matthew Evans mentioned Collaborarti and the Rainforest Exhibition and feels we could take advice from Collaborarti as they are very good with diverse exhibitors. Britta Atkinson suggested giving leaflets to churches with diverse congregations. Keith Harris talked about producing a leaflet featuring non-white members. DSW suggested inviting an artist from a different ethnic background to present at one of the Saturday meetings. SW talked about the Art Fair for the Ukraine in the Byram Arcade and how this was an opportunity to talk to people from other backgrounds.

Rob Greenwood asked if the life drawing group could continue over the summer with an occasional evening session. Availability would need to be agreed with Gledholt but support was approved.

DSW announced the outdoor days which have been agreed and arranged for this summer: June – The National Coal Mining Museum, July – Upperthong Village Hall and August – Hepworth Village Hall.

Linda Riggall suggested Wooldale Community Allotments and SS suggested Outlane for future outdoor venues.

Jean Parkinson feels it is shocking that we could lose the Art Gallery in the town centre, DSW pointed out that here are plans for the building to be an Art Gallery. Jean suggested sending a letter for back up and support.

Louise Heptonstall suggested another charity event in the Byram Arcade.

**Rachel Sykes**  
**Secretary**  
**2024**

THIS ISSUE OUR FEATURED ARTIST IS:

# ANNABEL MAAMOUN

**HAS:** When did you first become interested in drawing and painting?

**ARTIST:** I have always had an interest in art, sketching a bit, but this did not develop until my children had grown up. I used to knit and crochet a lot and use my own designs which brought me great pleasure. I also love baking and decorating cakes.



**HAS:** Did you study art at school, college or university?

**ARTIST:** I took O'level art at school but have not had any formal art education. My first informal art class was in Damascus, I was introduced to rooms full of busts and statues. Charcoal was the first medium I used followed by black and white pastel.

When I came to UK in 2012 I joined

a few art groups over the years and this was the real beginning of my art journey. I was introduced to water mixable oils and never looked back. I find this medium so versatile and easy to use.

**HAS:** What mediums do you like to use and why?

**ARTIST:** To be honest I haven't got a particular style or a particular favourite

medium. I wish I had because then maybe I could master something! I tend to use mixed media and there is always at least two different kinds of medium in any of my paintings – I really just have to feel an excitement for what I want to paint it could be any subject.

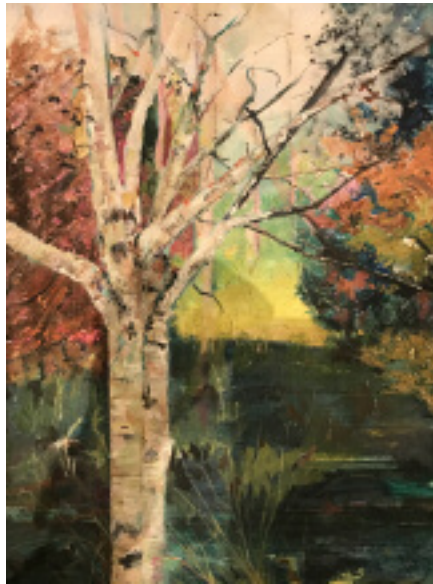
**HAS: How did you hear about HAS, and what do you enjoy about being a member?**

**ARTIST:** I was in a U3A art group in Meltham with Judith Bleazard and fortunately she introduced me to the HAS. I'm so happy she did as since joining my whole life changed in a very positive way. Making lots of new friends and enjoying the different activities.

**HAS: Which artists or art movements have inspired you?**

**ARTIST:** I have so many different artists that I admire but one of my favourites has to be Edgar Degas for his movement and color in his studies of ballerinas.

I also like more modern artists such as Shirley Trevana and Peter Graham for their still-life paintings. Their designs and compositions are truly inspirational for me.



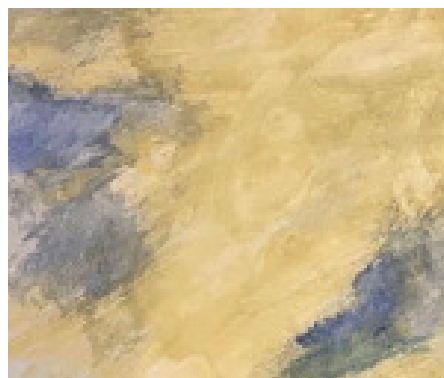
**HAS: What do you use as inspiration when starting a painting, and how do you progress as it develops?**

**ARTIST:** Wherever I go I always have my

mobile with me to take photos of anything that inspires me.

When I am painting I like to have quite a loose and free style. When I start to get tight and fiddly the spark goes.

If my painting starts evolving into something else I let it, this is a good creative sign for me!



# WELCOMING NEW MEMBERS

BILL BEST TELLS US A LITTLE ABOUT HIMSELF AND SHOWS EXAMPLES OF HIS WORK.

## BILL BEST

I'm a retired architect and have recently joined the Society. Over many years I have drawn and painted mainly landscapes and life figures and always take my sketch book when travelling. I've been attending life drawing classes off and on since the early 1990s and 20 years ago did a 3 year painting course at the Open College of the Arts. I now attend life classes at Globe Arts in Slaithwaite and Portrait evenings at the Huddersfield Arts Society. My favourite period in Art History, setting aside the present day, are the German Expressionists including die Brücke movement..



**We'll have more new members next issue**

THE HUDDERSFIELD  
**ARTIST**

**WANTS TO HEAR FROM YOU**

**DO YOU HAVE ANY NEWS ABOUT YOUR ART?  
ARE YOU EXHIBITING ANYWHERE?  
WON ANY AWARDS?**

**VISITED ANY GOOD EXHIBITION?  
KNOW OF ANY ART AND CRAFT FAIRS?  
KNOW OF ANY USEFUL WEBSITES?**

It's great for members to hear about what other members are up to.  
If you have anything of interest send me an email at: [glwartist@gmail.com](mailto:glwartist@gmail.com)

# GOODBYE TO A DEAR FRIEND

## MARY MCKENZIE PAYS TRIBUTE TO MARGARET FAIRCLOUGH, A LIFE-LONG MEMBER WHO RECENTLY PASSED AWAY

Originating from Halifax Margaret and her family were unlucky enough to be bombed out during the Second World War, when the Germans dropped unused bombs on her family home but luckily they were unhurt. Margaret's first job was colourising photos for Boots. During the 1960's and 70's while raising her family Margaret had a number of illustrated children's short stories published in women's magazines (as far away as Canada), and worked for both the Salvation Army Magazine and the Brownies Annual.

Margaret joined Huddersfield Art Society in 1987 and was made a Life Member last year. For many years Margaret attended HAS events with her late husband Ken (also a member), they both particularly enjoyed the outdoor painting days and Saturday demonstrations. For many years Margaret worked and then volunteered teaching Kirklees adults with learning disabilities in pottery.

After Ken's passing Margaret continued to attend the outdoor painting



Margaret (centre of picture with the red coat) at the gallery visit to Cooper Gallery in Barnsley



days and particularly enjoyed the art gallery visits with her HAS friends.

Margaret's keen interests were painting silk scarves and miniature potteries – and she even had her own kiln at home. Margaret produced beautiful

scarves and excellent miniature pottery – and was in fact an invited artist to the Holmfirth Art Week since the 1980's and regularly sold her entries!

The Cober Hill art holidays at the east coast was another favourite of both Ken and Margaret, again Margaret continued to attend after Ken's passing. Margaret was due to attend the annual Friendly Painting Group holiday next week – she will be greatly missed by her Cober Hill holiday friends.

Margaret was a lovely lady, very quiet and unassuming but she has left an indelible mark in both the Huddersfield Art Society and the Cober Hill Friendly Painters. And of course a very sad loss for her family.



## MEETINGS DETAILS

### SATURDAY MEETINGS

2 Saturdays per month  
(see opposite for confirmed subjects)

1.30pm -4.30pm at Moldgreen United Reformed Church Hall.

**Organiser: Jo Sykes**  
**07841826332**

### GALLERY VISITS

These occur twice a year to various galleries in the region.

**Organiser: David Whiting**  
**07981200395**

### OUTDOOR PAINTING DAYS

These will take place on a Saturday or Sunday during June, July and August. Details of the dates and venues will be announced in the spring of each year.

**Organiser: David Whiting**  
**07981200395**

### PORTRAIT GROUP

Meetings on Mondays  
6.45 -9.00pm Sept – end June, at Paddock Friends Meeting House.

**Organiser: Maggie O'Keeffe**

### LIFE DRAWING GROUP

Meetings on Thursdays from 1.30 (arrive at 1.15) -4.15pm Sept -end May, at Gledholt Methodist Church Hall.

**Organiser: Carol Wood**  
**07565183715**

### ABSTRACT GROUP

Meetings once a month on Fridays 10- 12.30am at Paddock Friends Meeting House.

**Organiser: Rachael Singleton**  
rachaelsingleton@icloud.com

## SATURDAY MEETINGS

### ALL MEETINGS ARE AT:

**Moldgreen United Reformed Church,  
319, Old Wakefield Road,  
Moldgreen, Huddersfield. HD5 8AA  
1.30—4.30pm**

### 13TH APRIL

Member's Workshop Portrait Party!  
Open to all!

### 27TH APRIL\*

Jan Folan: Tutor Led Workshop – Collage with Recycled Papers (Requires booking)

### 11TH MAY

Member's own workshop: painting Van Gogh's bedroom

### 25TH MAY

Sharmila Gupta: Demonstration and members workshop Glazing Techniques with Acrylics

### JUNE, JULY AND AUGUST

En Pleine Air Painting Days – (see page 9 for more details)



### 7TH SEPTEMBER

TBC

### 21ST SEPTEMBER

TBC

### 12TH OCTOBER\*

Moira Spencer: Tutor Led Workshop – Loosening Up in Watercolours (Requires booking)

### 26TH OCTOBER\*

Focus on Life/Figure Painting with the lifiedrawing group (Requires booking - not tutor led but places may be limited)

### 9TH NOVEMBER

Pippa Ashworth – Dynamic Mark Making to Depict Flora Demonstration

### 30TH NOVEMBER\*

Maggie O'Keeffe: Tutor Led Workshop – Mindful Painting (Requires booking)

### 7TH DECEMBER

Member's own workshop – Winter Theme

### 14TH DECEMBER

Christmas Lunch TBC

